

BHR CEPN Primary Care Bulletin

The latest training, offers and announcements.

In This Issue

**ENT Emergencies
Course**

EQUIP Training - Book now

**Prescribing Quality and Efficiency
Scheme**

**Designated Prescribing
Practitioner (DPP)**

**Diabetes Workforce Education
Programme**

Motivational Interviewing

Trauma Informed Care Taught

BHR CEPN Training Hub

info@manoravenue.co.uk

<https://bhrcepntraininghub.co.uk/#/login>



ENT Emergencies Course

This one day course covers the anatomy, recognition and treatment of ENT emergencies which may be encountered in primary care and in emergency care.

The course is delivered by ENT specialists using 3D models supplied by Fusetec. This will give participants a unique opportunity to practice their clinical skills on models.

The course is aimed at general practitioners, emergency physicians, ENT doctors, physician associates and nurse practitioners. For more information please read the attached flyer in the body of the email.



EQUIP Training Offerings

EQUIP would like to invite you to join our Fundamentals of QI Methodology and the EQUIP in Action training.

The two and half hour Fundamentals of QI Methodology training enables you to gain the essential tools needed to make practical changes to your practice. Conducted by our expert coaches, the training will take you through QI theory and allow you to use real life examples to tackle these using QI tools.

This training takes place over three days (please attend all three days) and it is recommended you have some basic knowledge of QI before joining these sessions.

Links below:

[EQUIP in Action \(12/09/23\)](#)

[Fundamentals of QI \(15/09/23\)](#)

Prescribing Quality and Efficiency Scheme

Please see details below for a Lunch & Learn session open to NEL GPs, Practice pharmacists (including practice employed and PCN pharmacists), PCN technicians, Nurses and Practice managers.

-Wednesday 13 September 2023, 1-2pm

Speakers: Rozalia Enti, Imran Khan, Yasmine Korimbux & Katti Nwosu

[Click here to book a place.](#)

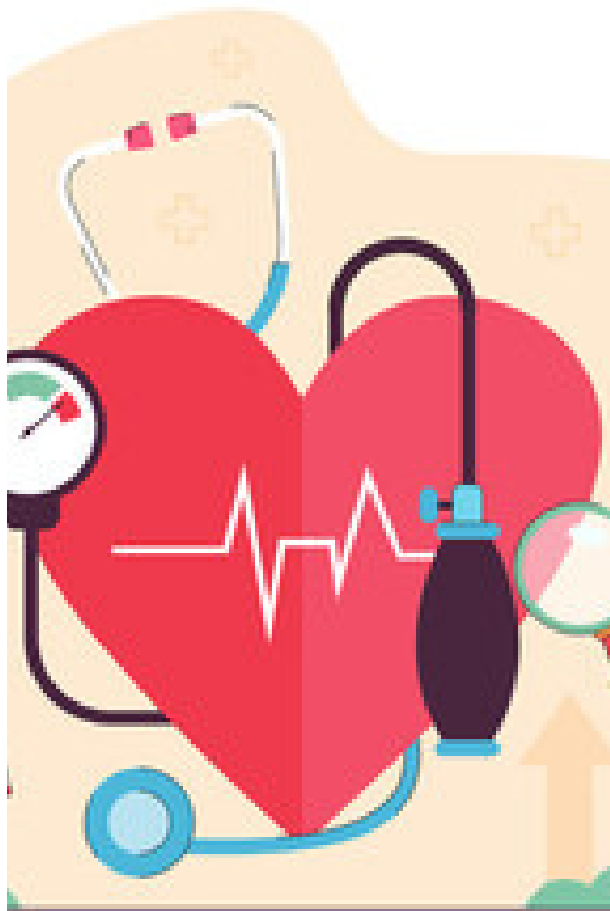


Designated Prescribing Practitioner (DPP)

The Primary Care Team within NHS England's Workforce Training and Education Directorate are delighted to announce a new multi – professional pilot course to help non-medical prescribers (NMP) become Designated Prescribing Practitioners (DPPs) allowing them to help supervise fellow colleagues.

Course dates: The course would consist of 5 online sessions each running 1 hour 30 minutes running over a 2 month period. Please only select one option from the 5 session.

Please see attached flyer in the body of the email.



Diabetes Workforce Education Programme

Diabetes is the fastest growing chronic health condition and equipping our workforce with the right skills and training has never been more crucial.

NEL Training Hub and NEL ICB jointly developed this five-tiered education programme tailored for diverse audiences.

See attached in the email the levels, target audience and training dates for each level. For information on each level, including learning outcomes, please explore the subsequent pages of the document and check them before registering to any level.

Limited Slots Available! - Secure your spot now – they are offered on a first-come, first-served basis.



Motivational Interviewing

This interactive, lighthearted online, live study day is suitable for any and all members of the team. Registered delegates will receive their personal set of CRAFT cards, which are used during and then following the event, plus a responsibility reminder training aid! Delegates will interact, participate and influence the content of the day which will use bespoke situations to demonstrate the MI skills and they will not be asked to role play or listen to us reading through endless power point slides.

This one day course is open to any health care professional who works in North East London with patients- especially in primary care and involved with their respiratory care in particular.

Course dates: 7 November 2023 or 1 February 2024

Please see attached flyer in the body of the email.

Trauma Informed Care Taught

Teesside University in association with North East London Training Hub are pleased to invite applications for the final phase of the trauma training across North East London: the taught learning course. We are pleased to invite applications for the final phase of the trauma training across North East London: Trauma Sensitive Approaches to Psychological Wellbeing taught course.

The course is designed for anyone who is interested in learning more about trauma and trauma informed care and would prefer a more traditional 'taught' approach to learning. The course has six full days (0930 – 1630) of scheduled online teaching over 12 weeks. You will be expected to attend all sessions. The content includes learning about trauma, childhood trauma, and the impact on an individual's life.

Trauma Sensitive Approaches to Psychological Wellbeing: Taught Provision 25th September 2023 & 22nd April 2024 [click here](#) to apply.

To book onto our monthly 3-hour universal workshops please [click here](#)

