

# BHR CEPN Primary Care Bulletin

*The latest trainings, offers and announcements*

## *In This Issue*

Lunch and Learn Webinar: Improving quality and access through group clinics

Mastering Lithium Management: Elevate Patient Care

Diabetes...A health equity and person-centred approach

New Independent Prescribing (IP) supervision resource for prospective Designated Prescribing Practitioners (DPPs), employers and system leaders

Chaperoning Training sessions

Health and Social Care fair

Invitation to take part in research exploring ARRS roles in Primary Care

NB Medical 'Hot Topics' GP Update

Chief Sustainability Officer's clinical fellow scheme

Training needs analysis

Personalised Prescribing:  
Pharmacogenomics From a Primary Care Perspective

Health check matters

BHR Long Term Condition Webinars

Apprenticeships Opportunities

NHSE Apprenticeship & Events

## **BHR CEPN Training Hub**

Email: [info@manoravenue.co.uk](mailto:info@manoravenue.co.uk)

X (Formerly Twitter): [@BHRCEPN](https://twitter.com/BHRCEPN)

Website: <https://bhrcepntraininghub.co.uk>

## Lunch & Learn webinar: Improving quality and access through group clinics

Date and Time: **FRIDAY 08 MARCH 12.30 – 13.30**

Join Women's health hubs on International Women's Day Friday 08 March to explore how women's health hubs are working to improve access and quality and how menopause group clinics delivered in primary care support this aspiration

Understand the Women's Health Hub agenda and the priority pathways that Women's Health Hubs are working to improve. Hear from Dr Elly Lesser how she led the introduction of menopause group clinics as part of her New to Practice Fellowship, and how group clinics have impacted on quality and access.

BOOK WEBINAR PLACES [HERE](#)

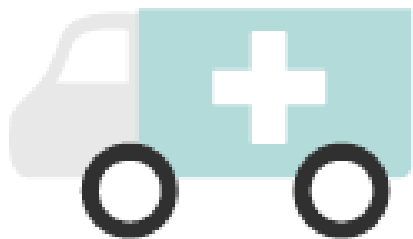
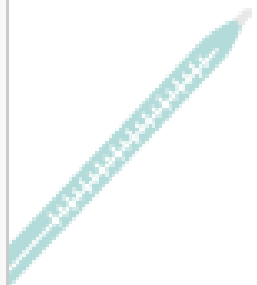
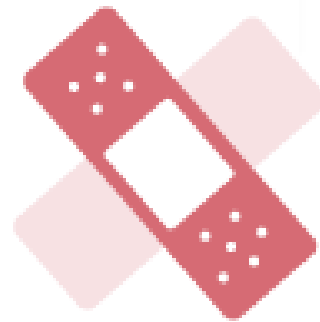




Waltham Forest Training Hub  
Transforming Health & Social Care



BHR CEPN  
YOUR TRANSFORMATION  
AND TRAINING HUB



# MASTERING LITHIUM MANAGEMENT

THURSDAY 7TH MARCH 2024

12PM - 1PM

MS TEAMS

[REGISTER HERE](#)



Explore crucial topics including lithium prescribing considerations, plasma level interpretation, risk management, and physical health monitoring requirements.



# North East London

## Diabetes - A health equity and person centred approach - what matters to you?

**7th March 2024 - 12.30pm to 13.15pm - ONLINE**

Join us for this exciting and interactive session where we will explore health equity and how to provide a person centred approach in diabetes.

### Aim of session

The aim is to support all workforce and personalised roles in supporting patients with diabetes.

We will be joined by Dr Jyoti Sood, NEL Training Hub Clinical Lead, Dr Payam Torabi NEL ICB Health Inequalities Clinical Lead, Dr Kavita Gaur NEL ICB Clinical Lead for Personalised Care and Alexandra Kyriakidis Health and Wellbeing Coach Waltham Forest who will share her insights on how to make a difference to these patients and how to implement this on the ground.

### Learning objectives

- Learn about key data around diabetes and health equity
- Learn about person centred care
- Learn about real case studies and how to implement in your practice
- Learn from patients how this approach has benefitted them

### Audience

Anybody, **working in North East London**, who has an interest in Health Equity, Person Centred Care and Long Term conditions, Diabetes and any role that provides care to these patients.

### Agenda

- 12.30-12.35 **Welcome and Introduction**- Dr Jyoti Sood
- 12.35-12.42 **Personalisation model and diabetes, Personalised roles** - Dr Kavita Gaur
- 12.42-12.52 **Recorded consultation with patient** - Alexandra Kyriakidis Health and Wellbeing Coach
- 12.52-12.57 **Patient perspective on this approach and what worked** (pre-recorded)
- 12.57-13.02 **How to implement on the ground** - Alexandra Kyriakidis Health and Wellbeing Coach
- 13.02-13.10 **Health equity and Diabetes** - Dr Payam Torabi
- 13.10-13.15 **Q+A and close**

**REGISTER**

For any questions, please email [nelondon.newhamtraininghub@nhs.net](mailto:nelondon.newhamtraininghub@nhs.net)

# New Independent Prescribing (IP) supervision resource for prospective Designated Prescribing Practitioners (DPPs), employers and system leaders

NHS England are pleased to announce a new multi-professional resource for clinicians considering becoming a DPP and employers and system leaders aiming to support DPP capacity in their workforce, particularly the pharmacy workforce.

The resource consists of a suite of web pages, frameworks, real-life examples and Frequently Asked Questions (FAQs). It also includes information for prospective DPPs from professions other than pharmacy, wishing to support a pharmacist IP learner.

The resource aims to reduce barriers to the DPP role by ensuring those eligible understand the role, its expectations and where to find advice and training. This could contribute to an increase in DPP and Independent Prescribing capacity across all sectors, particularly pharmacy primary care settings, including community pharmacies.

The resource can be accessed via the following [link](#)

## Chaperoning Training sessions

We are excited to announce that **BHR CEPN** will be hosting a half-day Chaperoning Training Session on **March 12th, from 9:30am to 1pm.**

Our interactive session is designed to equip participants with the skills needed to excel as chaperones.

### Key topics include:

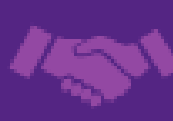
- Understanding the role of a chaperone during examinations
- Recognising situations where a chaperone is necessary
- Maintaining professional confidentiality
- Mastering consent protocols
- Managing risks effectively
- Working with diverse patient groups
- Raising concerns appropriately
- Functioning independently as a chaperone

This training is open to **managers, administrators, and clinical staff**. We invite everyone interested in enhancing their chaperoning skills to join us for this enriching opportunity.

For more information, please contact the organisers at [bhr@cherithsimmons.co.uk](mailto:bhr@cherithsimmons.co.uk). To sign up for the training, please visit sign-up page [here](#).

We look forward to seeing you at this value-packed training session and helping you become a top-notch chaperone!

# Inspired to work in Health and Social Care Fair



The event is open to all, no need to book, just drop in!

**Thursday  
21 March,  
10am to 2pm**

**Redbridge Town Hall,  
128-142 High Road,  
Ilford, IG1 1DD**

Come along and meet with training organisations and employers and find out about how you could start or develop a career in the health and social care sector.

For more information, tips, and ideas to help you find work, visit

[www.redbridge.gov.uk/workredbridge](http://www.redbridge.gov.uk/workredbridge)

This event is sponsored by the University of East London



University of  
East London



CARE  
PROVIDERS'  
VOICE



London Borough of  
**Redbridge**





# Invitation to take part in research exploring ARRS roles in Primary Care

You are invited to take part in research about ARRS roles in Primary Care. This will help to understand challenges and facilitators to how the ARRS programme is working with the hope of improving the future experience of ARRS staff and their colleagues.

## How can you help?

Go to this [link](#) and complete the survey. More information on the research project on the link. Participation is entirely voluntary, and your responses are anonymous. This shouldn't take longer than 10 minutes, but please provide as much feedback as possible. Please complete the survey by **8th of March 2024**.

## Who can complete this?

Anyone working in primary care that is an ARRS member of staff or anyone who works or manages/supervises ARRS staff. The first question in the survey will stream you to one of two slightly different surveys.

## Can I share the link?

Please do not share on social media or other public fora as we want to ensure responses come from colleagues in London. However, if there is a colleague you would like to forward this onto who works in Primary Care in London then please do.

A separate focus group around the topic of ARRS experience will take part online in March, if you would be willing to receive an invite please email: [madhulika.joglekar@kcl.ac.uk](mailto:madhulika.joglekar@kcl.ac.uk)

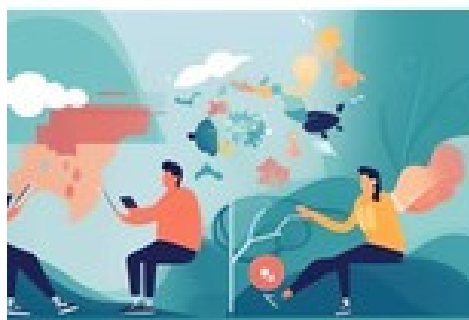
## If you have other questions?

Please email: [madhulika.joglekar@kcl.ac.uk](mailto:madhulika.joglekar@kcl.ac.uk)

## Who is undertaking the research?

Madulika Joglekar, is a medical student undertaking a BSc degree in Primary Care under the supervision of Dr Russell Hearn at King's College London.

The research outputs will be shared with NHS England to support the future of ARRS roles.



# NB Medical 'Hot Topics' GP Update

Attention to all clinicians working across NEL: An enriching GP Update course has been scheduled for your professional development. This course will provide a comprehensive update on the latest developments in the literature and serve as a valuable platform for continuing professional development (CPD).

**Date:** Saturday, 20th April 2024

**Time:** 09:30 – 17:00 (Doors open from 08:30)

**Location:** Impression Events Venue, Milner Road, West Ham, London, E15 3AD

To register, please visit the [NB Medical website](#).

The regular price for this course is £200, but thanks to the Training Hub, a subsidised rate of £99.99 is available exclusively for local staff. This fee includes all-day refreshments and a three-course meal.

Additional details regarding parking facilities, dietary and other accessibility requirements will be provided closer to the event.

**Please note that places are limited**, so early booking is strongly advised. See attachments for the access code for your borough.





# Chief Sustainability Officer's clinical fellow scheme

Sponsored by the Chief Sustainability Officer and managed by FMLM, this scheme has been established to identify and support clinicians who want to develop as clinical leaders and sustainability champions of the future. It offers clinicians with a passion for sustainability a unique opportunity to develop their leadership skills and support the NHS to realise its net zero ambitions. Those appointed to the scheme will work by engaging directly with the most senior leaders in the NHS, helping to embed net zero carbon principles across the healthcare system.

The scheme is multi-professional and welcomes applications from **allied health professionals, dentists, doctors in training [including public health registrars and SAS**

The eligibility is limited to people at the start of their careers. **Closes 27th of March.**

For more information, please contact [Sule Kangulec](#)

## Training Needs Analysis

### Calling all Personalised Care Practitioners!

The Personalised Care Practitioners workforce is a valued role within Primary Care Networks. We need to hear from you to ensure that we are offering training that best supports you in your role.

Do you feel like you are getting the training and development you need to thrive in your role? We want to hear from you so we can ensure that the right supports are in place. Please complete the Training Needs Analysis [here](#). This will be instrumental for our planning for the year ahead.

We look forward to hearing from you! If you have any questions, contact [Summer Cooper](#).

## Personalised Prescribing: Pharmacogenomics From a Primary Care Perspective

You are invited to this informative online webinar on the topic of "**Personalised Prescribing: Pharmacogenomics From a Primary Care Perspective**." As pharmacogenomics becomes increasingly relevant in the NHS, it is valuable for those of us in primary care to understand the fundamental principles.

### Event Details:

Personalised Prescribing: Pharmacogenomics From a Primary Care Perspective

Date: **Wednesday, March 13th**

Time: **12:00 - 13:00**

Platform: **[Online via Microsoft Teams](#)**

Please register for the webinar using this [link](#)



# Health Check Matters

## Improving the experience of Annual Health Checks for people with a Learning Disability

Patients with learning disabilities face some of the most complex challenges, and this includes their experiences accessing primary care.

However, many of us in primary care have not had the opportunity to truly understand what it's like to access primary care from the perspective of our patients with learning disabilities.

Join us for an engaging, lively, and motivating in-person workshop where our partners, People First, a self-advocacy group of 'experts by experience' will help us better understand their world through their eyes.

### Who should attend?

- Clinicians and non-clinicians working in primary care involved in Annual Health Checks for patients with a Learning Disability
- People with a Learning Disability who want to share their experiences and ideas with health professionals.



Workshops are taking place on the following dates, click the link to register your place:



- [Wednesday 20th March – 1:30pm – 4:30pm](#) - [BOOK](#)
- [Thursday 21st March – 10.00am - 1.00pm](#) - [BOOK](#)

For more information or to book a place, contact Summer Cooper at BHR CEPN email: [summer@manoravenue.co.uk](mailto:summer@manoravenue.co.uk) call: 078488 32363



**These workshops are funded by BHR CEPN and BHR&WF SuperHub**

# BHR Long Term Condition Webinars

Long-Term Condition (LTC) patients are growing in demand and severity, and some have multi-morbidities. There is a need for more responsive and coherent care and treatments need to be devised through collaboration with partners. The BHR LTC education programme was established in order to support both clinical and non-clinical workforce, for different tiered patients to manage these conditions in the most effective way.

Each LTC condition has been divided into three cohorts:

1) **Tier 1** is for those patients at the early onset of their LTC experience and can benefit from light touch interventions, particularly looking at lifestyle changes and decisions. The target workforce for these T1 webinars is:

Social prescribers / Care coordinators / Health & Wellbeing coaches / Social Care staff / Voluntary and Community Sector staff / Any other workforce who has service users with early onset LTC and can benefit from light touch interventions, particularly looking at lifestyle changes.

2) **Tier 2** is for those patients with more established LTCs but responding well to interventions. The target workforce for T2 webinars is main grade clinicians – GPs, nurses, pharmacists and other Allied Health Professionals.

3) **Tier 3** is for those patients with complex conditions or those not responding to/complying with interventions. The target workforce for these webinars is senior clinicians – GPs and advanced clinical practitioners.

**See fliers below to register to one of our webinars:**



**BHR CEPN**  
YOUR TRANSFORMATION  
AND TRAINING HUB

## Atrial Fibrillation

### Tier 3 cohort

by Drs Farheen Zulfiquer and

Consultant Cardiologist Afzal Sohaib

**Wed 6th March 12pm - on Zoom**

This is part of BHR CEPN LTC  
Education Programme

[CLICK TO REGISTER](#)

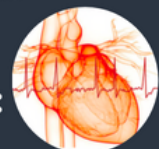
### Tier 3 cohort

The target workforce for this cohort are advanced senior clinicians e.g.

- GPs
- advanced clinical practitioners

### Learning Outcomes:

- Risk stratification in General Practice of patients with AF
- Management in General Practice of patients with AF
- Case Studies





**Chronic Obstructive Pulmonary Disease**  
by Dr Uzma Haque, Respiratory Nurse/Oxygen Lead Jadene McKenzie Hamilton and Senior HWBC Gee Gahir  
**Tier 3 cohort**

**Thur 7th Mar at 1pm on Zoom**

**This is part of BHR CEPN LTC Education Programme**  
[CLICK TO REGISTER](#)

**Learning Outcomes:**

- The epidemiology, causes and symptoms of Chronic Obstructive Pulmonary Disease (COPD)
- Diagnosis of COPD and overlap with asthma
- Changes in National Institute for Health and Care Excellence (NICE) on the management of COPD (pharmacological and non-pharmacological)
- How to help optimise the NICE guidance their COPD treatment and reduce side effects.
- How to support people self-manage their condition.



**Stroke Prevention**  
**Tier 1 cohort**  
by Dr Gurmeet Singh, and Pharmacist Malgorzata Burton

**Wed 13th March at 1pm - on Zoom**

**This is part of BHR CEPN LTC Education Programme**

[CLICK TO REGISTER](#)

**Tier 1 cohort**

The target workforce for this cohort are personalised care staff such as:

- Social Prescribers
- Care coordinators
- Health and Wellbeing coaches
- VCS staff
- Social carers

**Learning Outcomes:**

- What is AF and how is it linked to strokes
- How can I contribute to minimizing strokes due to AF
- What role can I play in providing personalised care in patients on stroke prevention treatment
- Who to screen
- Addressing some alerts
- Medications a patient should be on.



**Heart Failure**  
**Tier 3 cohort**  
by Drs Uzma Haque, Dania Shoeb Clinical Pharmacist Manpreet Saini and Senior HWBC Gee Gahir

**Fri 15th March at 2pm - on Zoom**

**This is part of BHR CEPN LTC Education Programme**

[CLICK TO REGISTER](#)

**Tier 3 cohort**

The target workforce for this cohort are senior clinicians such as GPs and other advanced clinical practitioners.

**Learning Outcomes:**

- Heart failure type and management as per NICE
- QOF indicators for Heart Failure (HF) and Case Studies
- Lifestyle changes to make to help with HF prognosis and symptoms as per NICE



# Apprenticeship Opportunities

## Does your job involve Quality Assurance or Quality Improvement?

Do you want to know how Apprenticeships can develop staff skills and knowledge in this area? Find out from 2 Trusts who have used these Apprenticeships successfully in our webinar on **Tuesday 12th March 2024, 13:00 - 14:00**

To book a place, please contact [Kerrie Haley](#).

## Business Analyst Training to Support Digital and Transformation Leads

This apprenticeship standard, lends itself to be customised to job roles such as PCN, Digital and Transformation Leads and also other business management roles. We are working with a training provider who has extensive experience with Primary Care workforce training and has developed a specialist offer. For further information contact [Kerrie Haley](#).

## Level 3 Team Leader or Supervisor

This apprenticeship standard is for those who are ready to progress to a first line management role, with operational and project responsibilities or responsibility for managing a team to deliver a clearly defined outcome. For further information contact [Kerrie Haley](#).

## Level 5 Operations and Departmental Manager

Management training for Practice Managers and Business Managers.

For further information contact [Kerrie Haley](#).

## Level 4 Associate Project Manager Apprenticeship

Would you like to develop a knowledge of the tools and principles of Project Management and gain a nationally, industry recognised qualification? Contact [Kerrie Haley](#) to find out more and join the next cohort.

## Social Care Providers Shout Out!

15 Apprenticeships have been confirmed across 4 providers. Would you like to benefit from the development and retention of staff apprenticeships can offer you as well as not paying 5% of the cost? Get in touch with [Kerrie Haley](#) to find out more.

Follow LinkedIn for day by day updates: <https://www.linkedin.com/company/apprenticeshipsgov/>

Find out more about Apprenticeships in Primary Care:

<https://haso.skillsforhealth.org.uk/primary-care-apprenticeships/>

Contact [Kerrie Haley](#) for further inquiries on any of the apprenticeships via email or call directly on **07895 526907**.

# Apprenticeship





# NHSE Apprenticeship & Notices

## Greener Nurses and Midwives week

When: **18th – 22nd March**

The first Greener Nurses and Midwives week is an opportunity to learn and share what it means to be a more environmentally sustainable nurses or midwife. The majority of activities will be happening on virtual platforms and social media, and we encourage you to take part. Alongside the events organised by each region, the CNO Sustainability team are hosting some national webinars across the week. These webinars are aimed at all nurses and midwives, across all regions and roles, interested in finding out more about the world-first NHS net zero ambition, progress made towards a greener NHS, and how you can get involved.

The London Greener NHS team and the Nursing Directorate are very excited to host two webinars during the Greener Nurses and Midwives week:

- **18th March, 2.30-3.30pm**, the first of the webinars is with **Jo Frame**, Clinical Fellow, Nursing and Midwifery Sustainability Team, Chief Nurses Office, NHS England. [Click here to register](#)
- **20th March, 2.30-3.30pm**, the second is with **Tricia Mukherjee**, Associate Chief Nurse, London North West University Healthcare Leadership in Sustainability and **Stephanie Ireland**, Staff Nurse and Sustainability Champion in AICU and Clinical Lead for Sustainability Development Group at RBH and Harefield. [Click here to register](#)

## Primary Care Nursing Live Event

Date: **8th March 2024**

Primary Care Nursing Live event, a CPD study day dedicated to primary care nursing.

This event is open to nurses working in primary care including practice nurses, community nurses, nurse practitioners and nurses with a prescribing qualification.

The event will be held at **155 Bishopsgate, Liverpool Street, London, EC2M 3YD**.

[Register here.](#)

## Primary Care UK Podcast – Air Pollution: A Silent Health Threat We Can't Ignore

The new episode of the Primary Care UK Podcast features a discussion on the critical issue of air pollution and its significant impact on health. Experts from London share insights on the pervasive problem, though the topic is highly relevant UK wide. They discuss different sources of pollution, health effects and the current climate change crisis, and the responsibility and potential for clinicians to advocate change.

The best way to listen to the episode is to find this on your podcast app (search for 'Primary Care UK') but alternatively the direct episode link is here: [Air Pollution: A silent health threat we can't ignore.](#)