

BHR CEPN Primary Care Bulletin

The latest trainings, offers and announcements

In This Issue

Online webinar and e-assessment: Annual Health Checks for Patients with Learning Disabilities

Deprescribing of benzodiazepines and z-drugs

GP & GPN Fellowship Scheme Registration Deadline Approaching

Carers Identification & Referral Pathway Training

Become a GP educator

Delivering Compassionate Support

Influencing Without Formal Authority

Navigating the NHS App webinar

Mental Health First Aid Awareness

Health Check Matters

BHR Long Term Condition Webinars

Physician Associate Webinar

Apprenticeships Opportunities

NHSE Apprenticeship & Events

BHR CEPN Training Hub

Email: info@manoravenue.co.uk

Website: <https://bhrcepntraininghub.co.uk>

Online webinar and e-assessment: Annual Health Checks for Patients with Learning Disabilities

Annual Health Checks (AHCs) for patients with learning disabilities (PWLD) proactively identify and address health concerns. However, our audit revealed quality inconsistencies that need improvement.

Our training aims to enhance AHCs outcomes using a structured medication review template and offering targeted webinars and training sessions to upskill primary care clinicians.

This training, funded by BHR CEPN for one person from each PCN, ensures clinicians can conduct comprehensive, efficient reviews that benefit patients and improve annual attendance. Staff will complete the online webinar and work with our AHC clinical lead to develop a specific training programme.

Take advantage of BHR CEPN's AHC training programme now!

For more information, please contact [Summer Cooper](#)



BHR CEPN
YOUR TRANSFORMATION
AND TRAINING HUB

Delivering Compassionate Support to people seeking sanctuary in North East London

The NEL Training Hub is excited to offer new dates for our two-hour introductory course, Delivering Compassionate Support to people seeking sanctuary, which was formerly known as the Asylum Welcome Design Lab.

We urge local health, care, and wider public sector teams to join us to increase their awareness of the challenges faced by people seeking sanctuary.

This training, delivered with REAP (Refugees in Effective and Active Partnership), will provide staff with the tools needed to support asylum seekers' integration into the community. We look forward to welcoming you on one of the available dates.

Date and Time:

Wednesday 7th February, 14:00 - 16:00

[CLICK HERE TO REGISTER](#)

Limited numbers apply early. Joining instructions will be sent 48 hours prior to delivery date

Influencing Without Formal Authority: A Virtual Workshop Series

The NEL Health Equity Academy is hosting a virtual workshop series on personal power and influence, led by **Dr. Jeanne Hardacre**, Founding Director of Impact4Health.

It will cover strategies for **growing confidence, leadership approaches, and tactics for influencing.**

The workshop series will be held on the following dates:

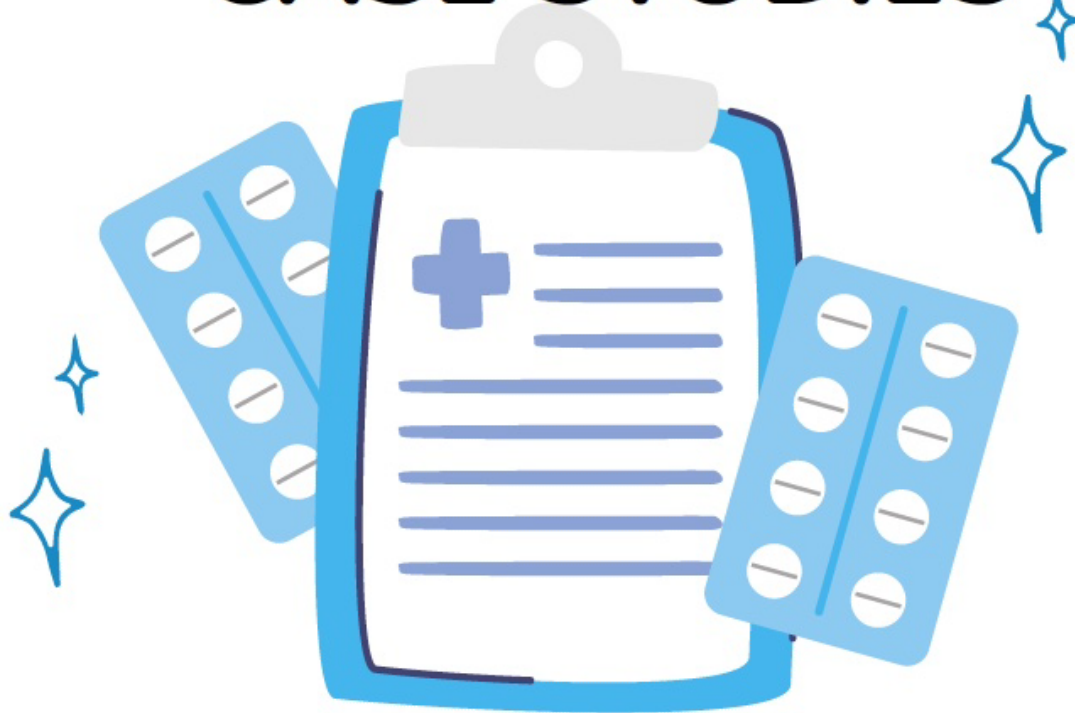
- Tuesday, 13th February 2024, 14:00 - 16:00
- Tuesday, 5th March 2024, 14:00 - 16:00
- Thursday, 28th March 2024, 14:00 - 16:00

This training is open to anyone working to reduce health inequalities within the ICS. For a sneak peek into what to expect, check out the video from Dr. Jeanne Hardacre [here](#).

Don't miss this opportunity to enhance your leadership skills. [Book your place now!](#)



DEPRESCRIBING OF BENZODIAZEPINES AND Z-DRUGS: CASE STUDIES



Thursday 8th February 2023

12pm - 1pm

MS Teams

[CLICK TO REGISTER](#)

JOIN OUR OPEN FORUM DISCUSSION ON
DEPRESCRIBING IN PRIMARY CARE. COME
PREPARED WITH A CASE STUDY AND QUESTIONS
TO SHARE WITH FELLOW PHARMACISTS.



Navigating the NHS App webinar

The NHS App can help streamline and improve patient experience. How confident are you at signposting patients to the NHS APP?

Sign up to the Navigating the NHS App webinar to find out how you can support your patients to make the most of the App and all the resources it has available.

This online training is available for all staff, both clinical and non-clinical, who have patients that use the NHS App.

Join us via zoom, on Thursday 8 February, 12.30 – 1.30pm

summer@manoravenue.co.uk



Is this a training you could benefit from?

[Click here](#) to sign up!

For more information, contact summer@manoravenue.co.uk



BHR CEPN
YOUR TRANSFORMATION
AND TRAINING HUB

Mental Health First Aid Awareness

This half-day course in North East London aims to raise mental health awareness, covering:

- Understanding of mental health and challenging stigma
- Basic knowledge of common mental health issues
- Self-care for mental health
- Confidence in interacting with those in distress
- Introduction to the benefits of the two-day Mental Health First Aider course

This introductory 4-hour session includes presentations, group interactions, and activities, with limited spots available to ensure a safe environment. Participants may gain insights from 'lived experience' of service users.

When & Where:

Friday 9th February 2024, 09:30 – 13:30 at Bernie Cameron Community Centre, 32 Merchant St, E4 4LX.

[CLICK HERE](#) to register

Booking closes on Monday 5th February 2024

You'll receive a manual that you can take away with you at the end of the session and an attendance certificate will be emailed to you from MHFA England following attendance at the course. Late arrivals and early departures will not be issued an attendance certificate.

GP & GPN Fellowship Scheme Registration Deadline Approaching

Attention newly qualified GPs and GPNs within 2 years of their qualification! You can still register for the National Fellowship Scheme to receive a full 2 years of support.

However, please note that all registrations will cease from **April 1st**, with no new enrolments accepted after this date. We encourage you to submit your applications before **March 31st** to benefit from this scheme.

Carers Identification & Referral Pathway Training

LBBD & Carers Hub are inviting Health, Social Care, Voluntary Sector to attend training to identify carers locally & refer to Carers Hub on **Monday 12th Feb** at **10:00am**.

Click [here](#) to register

Become a GP educator

Interested in being a GP educator?

We're seeking GPs to train as educators. To streamline the process, please express your interest by completing the form linked below. The next cohort is **September-December 2024**. The NEL Training Hub will forward eligible applicants to the central team in April. Each applicant must complete the form individually. Priority will be given to applicants from underrepresented Boroughs.

[Expression of interest form](#)



Health Check Matters

Improving the experience of Annual Health Checks for people with a Learning Disability

Join us for one of the workshops using 'Forum Theatre' to explore how the Annual Health Check feels from the viewpoint of people with a Learning Disability (LD), and how we can improve the patient experience and outcomes together.

The workshops are led by People First (Self Advocacy), a user-led organisation.

Who should attend?

- Clinicians and non-clinicians working in primary care involved in Annual Health Checks for patients with a Learning Disability
- Participants will be joined by people with a Learning Disability who want to share their experience with health professionals



Workshops are taking place on the following dates:



- Tuesday 19th March – 1:30pm – 4:30pm
- Wednesday 20th March – 1:30pm – 4:30pm
- Thursday 21st March – 10.00am - 1.00pm

For more information or to book a place, contact Summer Cooper at BHR CEPN email: summer@manoravenue.co.uk call: 078488 32363



BHR CEPN
YOUR TRANSFORMATION
AND TRAINING HUB

People First

a voice for people with learning difficulties

These workshops are funded by BHR CEPN and BHR&WF SuperHub



BHR CEPN

YOUR TRANSFORMATION
AND TRAINING HUB

Learning Outcomes:

- Overview of Atrial Fibrillation and diagnosis
- Treatment of Atrial Fibrillation (AF)
- Stroke prevention in AF
- Case Studies



Atrial Fibrillation (AF) happens when abnormal electrical impulses suddenly start firing in the atria.

These impulses override the heart's natural pacemaker, which can no longer control the rhythm of the heart. This causes highly irregular pulse rate.

The cause is not fully understood, but it tends to affect certain groups of people, such as older people and people living with long-term (chronic) conditions such as heart disease, high blood pressure or obesity

Atrial Fibrillation

by **Dr Gurmeet Singh, Senior clinical pharmacist** **Mohammad Kanji & Clinical Pharmacist Malgorzata Burton**

Tier 2 cohort

Wed 7th Feb at 1pm - on Zoom

This is part of BHR CEPN LTC Education Programme

[Click here to register](#)



BHR CEPN

YOUR TRANSFORMATION
AND TRAINING HUB

Chronic Obstructive Pulmonary Disease (COPD) is associated with lifestyle risk factors and some environmental exposures. Appropriate management of established COPD through lifestyle change and therapies can prevent crises, delay further progression and lead to significant improvements in quality of life.

Learning Outcomes:

- Fundamentals of COPD care
- Health literacy and what info to give to newly diagnosed COPD
- Prescribing for stable COPD
- When to use Steroids inhaled or oral
- Long term Oxygen therapy and Lung surgery



Chronic Obstructive Pulmonary Disease as a Long-term condition Webinar by Drs Uzma Haque, Gurmeet Singh and Senior HWBC Gee Gahir

Tier 2 cohort
Thur 1st Feb at 1pm on Zoom

This is part of BHR CEPN LTC Education Programme

[Click here to register](#)

BHR Long Term Condition Webinars



BHR CEPN
YOUR TRANSFORMATION
AND TRAINING HUB

Tier 2 cohort Webinar

**Heart Failure by Drs Uzma Haque,
Dania Shoeb, Senior HWBC Gee
Gahir & Pharmacist Manpreet
Saini**

Tue 13th Feb - 1pm on Zoom

**This is part of BHR CEPN LTC Education
Programme**

[Click here to register](#)

We will look at:

- What is Heart Failure (HF)
- What are its causes
- Why is it important
- How to diagnose it
- Key issues in an echo report
- How to optimise management in primary care
- How secondary care can make a difference
- Frailty, end of life care and heart failure
- The role of personalised care roles in shaping well-being through early intervention
- How personalised care can facilitate self-supported management of HF



BHR CEPN
YOUR TRANSFORMATION
AND TRAINING HUB

Asthma T3 cohort

**by Drs Uzma Haque, Suparna
Chakrabarti and Consultant
Respiratory Physician Dr Manoj
Menon**

Tue 6th Feb 12.30pm - on Zoom

**This is part of BHR CEPN LTC Education
Programme**

[Click here to register](#)

Tier 3 cohort

The target workforce for this cohort are advanced senior clinicians e.g.

- GPs
- advanced clinical practitioners



Learning Outcomes:

- How to diagnose and manage Asthma & COPD overlap.
- When to refer to secondary care
- **Bring your own case studies for review by the educators**

BHR Long Term Condition Webinars



BHR CEPN

YOUR TRANSFORMATION
AND TRAINING HUB

MSK Low Back Pain

**by Advanced MSK Physiotherapist
Sue-ellen Pereira and Senior HWBC**

Gee Gahir

Tier 2 cohort

Wed 21st Feb - 2pm on Zoom

**This is part of BHR CEPN LTC Education
Programme**

[CLICK TO REGISTER](#)

The **Tier 2 cohort** includes main grade clinicians such as Allied Health Professionals, Nurses, GPs and Pharmacists.

Learning Outcomes:



- Case study For Low back pain
- Management of Low back pain
- Supporting Self Management (Acute and Chronic Conditions)



BHR CEPN

YOUR TRANSFORMATION
AND TRAINING HUB

Osteoporosis

**by Drs Jothimurugan Subramanian
and Thushani Wickramaratne,**

Senior HWBC Gee Gahir and

Osteoporosis Specialist Nurse Dee

Tomasso

Tier 1, Tier 2 & Tier 3

Thu 29th Feb - 12.30pm on Zoom

**This is part of BHR CEPN LTC Education
Programme**

[CLICK TO REGISTER](#)

This webinar includes all those who treat service users/patients with osteoporosis in both clinical and non-clinical roles

Learning Outcomes:



- Understanding osteoporosis and osteopenia
- Causes and prevention of osteoporosis
- Investigations and management of osteoporosis in primary and secondary care

BHR Long Term Condition Webinars



Hypertension for Tier 3 cohort
by Drs Dania Shoeb,
Jothimurugan Subramanian,
Sandeep Singh, pharmacist
Manpreet Saini and Senior HWBC
Gee Gahir

Fri 16th Feb 12.30pm - on Zoom

**This is part of BHR CEPN LTC Education
Programme**

[Click here to register](#)

The target workforce for this cohort for this webinar is senior clinicians such as **Advanced Clinical Practitioners and GPs**.

Learning Outcomes:

- Established HTN - investigating secondary causes
- How to classify worsening HTN? I.e. Stage 1 to Stage 2
- Defining uncontrolled HTN
- Hypertensive emergencies - what is expected of our secondary care colleagues
- Case studies



Physician Associates Webinar

Physician Associates Webinar



Background

We all know **General Practice is under huge pressure** where demand is outstripping supply and patients' needs are ever more complex. The Physician Associate (PA) role has been introduced by NHSE and funded through ARRS to increase clinical capacity in General Practice. Working alongside GPs and the wider primary care workforce, PAs are bringing much needed expertise and capabilities to General Practice across England.

However, the PA role has attracted some controversy in the media and in addition hasn't landed well across BHR primary care.

How can we work together to maximise the benefits of the PA role and continue to enhance clinical capacity across BHR?

Join us on Wed 21st Feb at 12.30pm

At this webinar you will hear from Drs Jyoti Sood and Dania Shoeb alongside NEL PA Ambassador Marium Hanif and you will learn:

- How PAs are being supervised
- How PAs are enhancing the capacity of general practice
- How PAs are improving the experience of care for our patients



[Click to register](#)

Apprenticeship Opportunities

National Apprenticeship Week is here!!!

Join our Making Apprenticeships Work for You Webinar Event – **Thursday 8th February 2024, 1:00-2:00pm**

An opportunity to explore how apprenticeships can benefit you and your organisation. We will provide an introduction to how apprenticeships work and how they can be used as a tool to for career and workforce development and how they can get new people into your organisation and retaining and growing existing staff. To book a place, please contact [Kerrie Haley](#).

Hear from a Nursing Associate working in Primary Care who qualified through the Apprenticeship: https://youtu.be/2W_3H2nbO94

Follow LinkedIn for day by day updates:

<https://www.linkedin.com/company/apprenticeshipsgov/>

Find out more about Apprenticeships in Primary Care:

<https://haso.skillsforhealth.org.uk/primary-care-apprenticeships/>

The Following Apprenticeships are Available:

Trainee Nursing Associate (TNA)

March 2024 applications are still open but time is running out! Please contact [Kerrie Haley](#) for further information on this and further cohorts for 2024 and to book onto an information Briefing.

Business Analyst Training to Support Digital and Transformation Leads

This apprenticeship standard, lends itself to be customised to job roles such as PCN, Digital and Transformation Leads and also other business management roles. We are working with a training provider who has extensive experience with Primary Care workforce training and has developed a specialist offer. For further information contact [Kerrie Haley](#).

Level 3 Team Leader or Supervisor

This apprenticeship standard is for those who are ready to progress to a first line management role, with operational and project responsibilities or responsibility for managing a team to deliver a clearly defined outcome. For further information contact [Kerrie Haley](#)

Level 5 Operations and Departmental Manager

Management training for Practice Managers and Business Managers.

For further information contact [Kerrie Haley](#).

Contact [Kerrie Haley](#) for further inquiries on any of the apprenticeships via email or on **07895 526907**.

Apprenticeship



NHSE Apprenticeship & Events

London Region event for BAME Nurses and Midwives – Influencing Global Nursing

Date: **22nd February 2024** at **10:00 – 16:30**

The Chief Nursing Officer and the Chief Midwifery Officer's Black and Minority Ethnic Strategic Advisory Group are delighted to welcome staff to attend an event on how they are influencing and can influence global nursing.

This event will be held in person at Broadway House, **Tothill Street, London, SW1H 9NQ**, as well as online.

Please contact naira.mnatsakanova@nhs.net to book a place for this event.

Cancer Genomics in Primary Care – Lunchtime webinar

Date: **8th February 2024** at **12:00pm – 1:00pm**

This webinar will be hosted by esteemed clinician, **Dr Angela George**, who is Clinical Director of Genomics at the Royal Marsden.

This webinar forms part of the Cancer Community of Practice series of events for 2023-24. The Cancer CoP is a collaboration with the London Transforming Cancer Services Team (TCST), NHS England (London), Workforce, Training & Education Directorate and Central London Community Healthcare Trust (CLCH).

Find out more about the webinar and register your place [here](#). Any questions, please contact [Sandra Dyer](#), TCST.

Care Navigation training – Nationally funded training offer available only until 31st March 2024

Practice and PCN managers can nominate one member of their team to attend either the foundation or the advanced, ideally reception staff and care navigators involved in triaging requests, to complete the virtual training. The final dates for virtual training delivery have now been released, dates are offered between **8th January 2024** and **31st March 2024**.

Sessions are CPD accredited and include two 2.5 hour training events, delivered via MS Teams with a further 1 hour learning transfer session to complete the training.

Two levels of training have been commissioned (foundation and advanced) - follow the [link](#) to find out more about the two levels of training and to book training places.

Community pharmacy teams – get ahead for Pharmacy First

Community pharmacy teams can now get ahead for Pharmacy First with NHS funded training.

Please see updates on the courses – all listed [here](#).