

BHR CEPN Primary Care Bulletin

The latest trainings, offers and announcements

In This Issue

Cherith Simmons Courses Available

E-Portfolio (supported) Route for Pharmacists

Keeping WellNEL Wellbeing Ambassador Peer Support Programme

Newham Supervision and Appraisal Training Focusing on AARS Roles

Winter Pressures Webinar

BHR CEPN Leadership and Team Building

BHR CEPN Employment law

NEL CKD Programme

Leading Transformation for Integrated Care Programme

Court of Protection & Deprivation of Liberty Safeguards - COP/DOL's

Bone Infection in Primary Care

Introduction to Trans Awareness - new dates!

BHR CEPN Training Hub

Email: info@manoravenue.co.uk

Website: <https://bhrcepntraininghub.co.uk>

Cherith Simmons Learning & Development - Courses Available

CLEVER – Practice Management ILM Level 5

This programme is designed for managers and administrators in Primary Care settings. It covers and refreshes the essential skills of operational managers in any primary care setting, delivering tools and techniques for effective management in a challenging and rapidly changing environment.

[Click here to book on.](#)

Basic Excel

This basic Excel course will introduce you to various types of formulas, explore the different functions in Excel, and help you understand the ranges that Excel have to offer.

The course is delivered via a live an interactive tutor on Zoom.

[Click here to book on.](#)

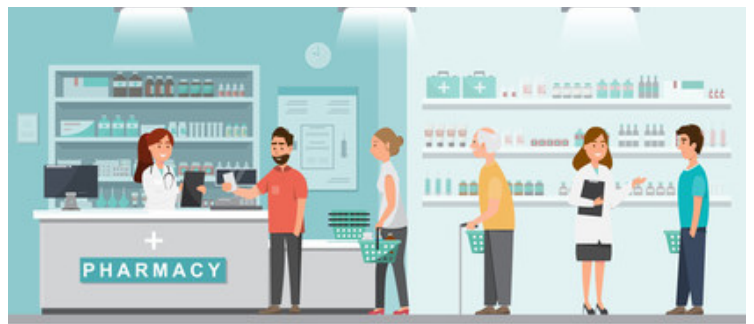
E-Portfolio (supported) Route for Pharmacists

The NHS England Workforce, Training and Education Centre for Advancing Practice has partnered with the Royal Pharmaceutical Society (RPS) to offer a professional development pathway for advanced pharmacist practice. This pathway recognises the quality assurance of advanced practice education, training, and experience for pharmacists. Successful completion of the pathway results in pharmacists being recognised as advanced practitioners by the RPS and earning the Centre for Advancing Practice's 'Advanced' digital badge.

Pharmacists applying for the Centre's ePortfolio Route have the opportunity for their applications to be assessed and supported by the RPS and the Centre for Advancing Practice. This collaborative approach allows pharmacists to gain recognition from both organisations without needing to complete separate ePortfolio processes. The dual recognition route is fully funded by the Centre for Advancing Practice.

Pharmacists interested in gaining recognition as an advanced pharmacist and earning the Centre's 'Advanced' digital badge can complete the [Expression of Interest form](#) from the Centre and the [registration form](#) for the Centre for Pharmacy Postgraduate Education (CPPE), the education partner of the RPS.

For more information or any questions about this ePortfolio process, please contact the Centre at england.advancedpractice@nhs.net.



Keeping WellNEL Wellbeing Ambassador Peer Support Programme

This essential training is aimed at those who have been identified as the Wellbeing Co-ordinators/Leads. Click [here](#) to book onto the training:

Please direct any questions to: **Maria Healy, KeepingWellNEL Social Care Sector Wellbeing Transformation Lead** or Email: maria.healy9@nhs.net

Winter Pressures Webinar

EASE WINTER PRESSURES WITH GROUP CLINICS

Tuesday 28 November 12:30-13:30

At this session, you will learn first-hand from three teams Hear from 3 teams who have harnessed group care to proactively address winter pressures amongst populations who are at high risk of hospitalisation.

- A team that has undertaken 150 COPD QOF reviews in 3 days, and provided a “Winter MOT” for this group, including any missing vaccinations
- A team whose group clinic work with a group of children with complex asthma led to prevention of hospitalisation over the winter months
- A team who responded to demand for GP appointments from families with young children about common childhood illness and Strep A in 2022 with a group care model that meant they felt confident to cope without a visit to the GP

Book your place for this free webinar now so that you can understand the potential of group clinics as a way to improve access, maximise quality and prepare your patients for winter.

MAXIMISE PERSONALISED CARE THROUGH GROUP CLINICS

NEXT WEEK: Tuesday 17 October 12:30-13:30

Learn from The Personalised Care Institute why a group approach to personalised care is an essential element of future delivery, and hear the lived experiences of practitioners who deliver this way and have realised the benefits.

BOOK YOUR WEBINAR PLACES FOR THIS SESSION [HERE](#)



Newham Supervision and Appraisal Training Focusing on AARS Roles

As part of the Newham Retention Strategy to support PCNs and practices with ongoing supervision and appraisals, coaching and mentoring, a training offer has been developed for staff members across PCNs and practices. The training is aimed at practice staff delivering clinical supervision – GPs, senior staff, clinical leads in Newham including AARS staff. It is also aimed at all those staff wishing to develop their skill sets and in future deliver clinical supervision in agreement with their practice or service provider.

PROGRAMME 1 - UNDERSTANDING SUPERVISION (ARRS)

2.5 HOUR WEBINAR

This webinar introduces the role of the supervisor and the differences between line management, appraisal, mentoring, coaching and supervision.

DATES:

- Monday 23rd October, 2:00pm - 4:30pm
- Monday 6th November, 2:00pm - 4:30pm
- Tuesday 5th December, 2:00pm - 4:30pm

CLICK [HERE](#) TO REGISTER.

PROGRAMME 2 - MENTORING AND COACHING SKILLS (ARRS)

2.5 HOUR WEBINAR

By working through case-studies participants will be able to practise mentoring and coaching skills by applying the GROW model.

DATES:

- Wednesday 8th November, 2:00pm - 4:30pm
- Wednesday 6th December, 2:00pm - 4:30pm

CLICK [HERE](#) TO REGISTER

PROGRAMME 3 - APPRAISAL, SUPERVISION - PROCESS AND REGULATORY GUIDANCE

2.5 HOUR WEBINAR

Ideally participants will have completed Modules 1 and 2 prior to attending this webinar.

The programme focuses on formalising documentation by reviewing the requirements of the regulatory bodies and the practice aims and objectives.

DATES:

- Tuesday 24th October, 2:00pm - 4:30pm
- Wednesday 25th October, 2:00pm - 4:30pm
- Wednesday 22nd November, 2:00pm - 4:30pm
- Tuesday 12th December, 2:00pm - 4:30pm

CLICK [HERE](#) TO REGISTER.

PROGRAMME 3 (PA SUPERVISORS) - APPRAISAL, SUPERVISION - PROCESS AND REGULATORY GUIDANCE

2.5 HOUR WEBINAR

Ideally participants will have completed Modules 1 and 2 prior to attending this webinar.

The programme focuses on formalising documentation by reviewing the requirements of the GMC – PA Shared Learning Outcomes and the practice aims and objectives.

DATE:

- Thursday 23rd November, 2:00pm - 4:30pm

CLICK [HERE](#) TO REGISTER.

The HEARTBEAT of BHR GENERAL PRACTICE



BHR CEPN

YOUR TRANSFORMATION
AND TRAINING HUB

EMPLOYMENT LAW

**Part 1: 16/11/23 from 09:30 -
12:30**

**Part 2: 23/11/23 from 09:30 -
12:30**

**ENROL
NOW!**

Course Content

- This programme provides managers with the essential knowledge to ensure they are managing within the law in all personal matters
- It covers every aspect of personal and HR related law and is continually updated to take account of changes in employment legislation
- Coupled with our Performance Management programme it provides managers with the complete suite of legal knowledge required to manage a team with current legislation
- Specific anonymised issues can be explored and resolved within the session and there are numerous case studies and scenarios

When is it?

The next Employment Law session is split into 2 parts as follows:

Part 1 on **Thursday 16/11/23 from 09:30 - 12:30**

Part 2 on **Thursday 23/11/23 from 09:30 - 12:30**

How is it delivered?

Via live, **highly interactive** tutor led **Virtual Workshops** using Zoom – max 20 participants
Microphones and cameras required for the entire session

To register, please [click here](#)

Contact us at:

bhr@cherithsimmons.co.uk



The HEARTBEAT of BHR GENERAL PRACTICE



BHR CEPN

YOUR TRANSFORMATION
AND TRAINING HUB

LEADERSHIP & TEAMBUILDING

Part 1: 30/11/23 from 09:30 -
12:30

Part 2: 07/12/23 from 09:30 -
12:30



ENROL
NOW!

Course Content

- This programme is designed for managers and administrators
- It is intended to refresh or supplement existing management skills effectively managing a team in general practice.
- It will examine individual leadership styles and leadership approaches applicable to a rapidly changing primary care environment.
- It will embody established and developing leadership approaches which can be practically applied
- It will explore the impacts on teams, their formation, management and performance and the essentials of successful teamwork.

When is it?

The next Leadership and Teambuilding session is split into 2 parts as follows:

Part 1 on **Thursday 30/11/23 from 09:30 - 12:30**

Part 2 on **Thursday 07/12/23 from 09:30 - 12:30**

How is it delivered?

Via live, **highly interactive** tutor led **Virtual Workshops** using Zoom – max 20 participants
Microphones and cameras required for the entire session

To register, please [click here](#)

Contact us at:

bhr@cherithsimmons.co.uk



NORTH EAST LONDON CKD TRAINING PROGRAMME

[CLICK HERE TO REGISTER TO THE ONLINE SESSION](#)

NEL Training Hub would like to invite you to attend the third online session of the NEL CKD Programme on Thursday 19th October at 1pm.

SESSION 3:

Thursday 19th October, 1pm - 2pm

TOPIC:

Diet and hypertension and practical management of anaemia in CKD

LEARNING OBJECTIVES:

- Pathophysiology of renal anaemia
- How to diagnose anaemia due to CKD
- How to treat anaemia of CKD
- Potassium and hypertension

PREVIOUS SESSIONS:

Session 1 - Delivering Patient Care for Patients with CKD in NEL – 26 Apr 23

[RECORDING](#)
[SLIDES](#)

Session 2 - Coding and managing risk for CKD - How and why? - 27 Jul 23

[RECORDING](#)
[SLIDES](#)

Upcoming Sessions - Topics to be announced soon!

Session 4 - Thursday 30th November, 1pm - 2pm

Session 5 - Wednesday 31st January, 1pm - 2pm

Session 6 - Thursday 4th April, 1pm - 2pm

[CLICK HERE TO REGISTER TO THE ONLINE SESSION](#)

IF YOU HAVE ANY QUESTIONS OR YOU WOULD LIKE TO DELIVER A SESSION PLEASE DO CONTACT NELONDON.NEWHAMTRAININGHUB@NHS.NET

LEADING TRANSFORMATION FOR INTEGRATED CARE' PROGRAMME

Please see details of our NEL Training Hub bitesized '[Leading Transformation for Integrated Care' programme.](#)

This is an excellent programme for anyone wishing to develop greater awareness of the issues, challenges and opportunities presented by the integrated care agenda.

Additionally, this bitesized programme complements and is a great preparation for PCN Leadership teams currently completing, or soon to complete, the BHR CEPN PCN Leadership Development programme, which is supporting the development of transformative, engaging and collaborative approaches to leadership.

Who Leads in asystem	Tuesday 24th October 2023 14.00 - 15.30 Book Here	This topic will explore who leads in a systems context and how to lead across boundaries.
Improving the Health of our local Communities	Tuesday 7th November 2023 10.00 - 11.30 Book Here	This topic will explore the difference between organisational performance and real, practical outcomes and value for patients and local communities.
Leading alongside your local communities	Tuesday 21st November 2023 10.00 - 11.30 Book Here	This topic will explore engagement and co-production with communities. How can you work as leaders to hear the voice of local communities and work with their strengths and assets.
Rethinking recovery - a system perspective	Wednesday 6th December 2023 10.00 - 11.30 Book Here	This topic will explore system responses to crisis and recovery.
Collaborating with your neighbourhood /place	Thursday 8th February 2024 11.00 - 12.30 Book Here	This topic will explore how to collaborate across statutory partners and communities at place levels.
System workforce innovation	Wednesday 6th March 2024 10.00 - 11.30 Book Here	This topic will explore innovative approaches to our workforce and the challenges working in a system brings to the workforce.
Humanising the machine	Tuesday 19th March 2024 10.00 - 11.30 Book Here	This topic will explore how culture can be developed and nurtured at a 'system' level.
Collaboratives - developing new ways of working	Tuesday 2nd April 2024 10.00 - 11.30 Book Here	This topic will explore the different approaches to 'Collaboratives' as ways of working together across organisations and sectors at Place, across Providers and at System level.
Leading MDTs	Wednesday 17th April 2024 10.00 - 11.30 Book Here	This topic will look at the context and evidence base for setting up and running effective MDTs or Integrated Neighbourhood Teams with primary care and partners.

COURT OF PROTECTION & DEPRIVATION OF LIBERTY SAFEGUARDS - COP/DOL'S

Join Dr. Sabeena Pheerunggee and Samantha Chessa, Designated Professional Safeguarding Adults, for a lunch and learn session on the **Court of Protection and Deprivation of Liberty Safeguards**.

This session aims to provide primary care clinical staff with a comprehensive understanding of COP/DOLs and their role within it.

Learning Outcomes:

- What it is ?
- What is my role ?
- Who will be subject to COP/DOLs
- Why do they need it
- Where does this process take place?
- How does this affect the patient and me?

Date:

Wednesday 22nd November

Time: 1:00 PM - 2:30 PM

BOOK [HERE](#)



BONE INFECTION IN PRIMARY CARE

Please see details below for this Bone Infection in Primary Care Webinar.

Learning Outcomes:

- Understand the pathophysiology of bone infection (including osteomyelitis and fracture related infection)
- Recognise how bone infection may present
- Be aware of investigations that are helpful in the diagnosis and management of bone infection
- Understand the treatment principles of bone infection
- Know when to refer and appropriate referral pathways

Guest speaker:

Elizabeth Tissingh - Consultant Orthopaedic Surgeon

Date: 8th November 2023

Time: 14:00 - 15:00

[Click here to register.](#)

INTRODUCTION TO TRANS AWARENESS – NEW DATES!

NEL Training Hub is pleased to announce new dates for the popular Introduction to Trans Awareness programme, designed for all staff working across North East London. This introductory session, delivered by Gendered Intelligence covers the following areas to develop understanding and empathy for those interacting with Trans identities:

- Setting the wider context for Trans identities - how sex, gender, and sexual orientation interact
- Exploring key terms and the use of language
- Providing a basic grounding in the legislation surrounding the rights and responsibilities related to Trans identities
- Initiating discussions on how organisations can ensure they are trans-inclusive
- Offering links to a wide range of resources

Dates:

- Tuesday 24th October, 14.00 - 15.45
- Wednesday 22nd November, 10:00 - 11.45
- Friday 15th December, 10:00 - 11.45

[Click here to register](#)