

BHR CEPN Primary Care Bulletin

The latest trainings, offers and announcements

In This Issue

Exploring Neurodiversity

**CPPE - Newly Qualified Pharmacist Programme
2023-24**

**Improving Quality, Access and Recovery
Planning**

London Living Wage in Primary Care Webinar

CVD Academy launched

**LTC Outcomes Webinar 2: Technical &
Financial Element**

Motivational Interviewing

ARRS Workforce Impact Survey

Workforce Planning Masterclass Training

London Cancer Community of Practice Event

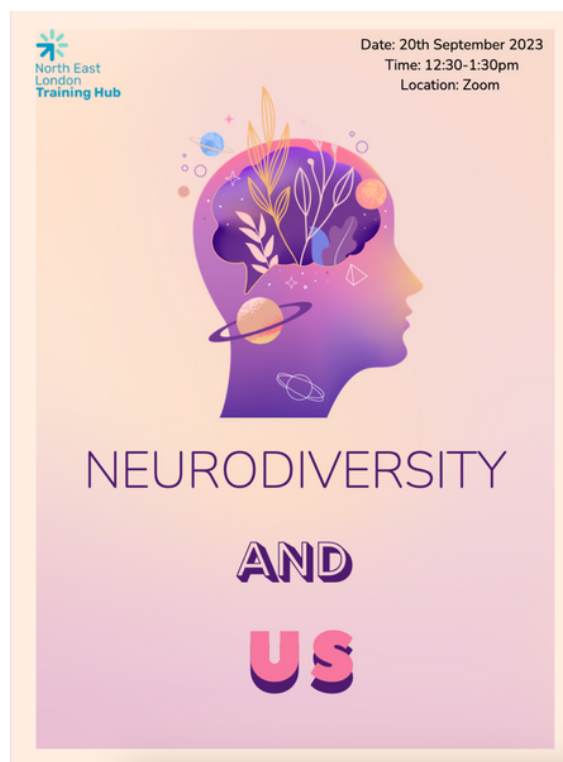
**Primary Care Podcast - Patient Access to
Records**

BHR CEPN Training Hub

Email: info@manoravenue.co.uk

Website: <https://bhrcepntraininghub.co.uk>

EXPLORING NEURODIVERSITY



Join us to explore our collective experiences delivering health and care across NEL, with a focus on neurodiversity - what it is and how it shapes us. This session seeks to support our community navigate challenges and opportunities in NEL care through sharing knowledge and experience- please note this is not a teaching session, it is a community of practice. Join us for an uplifting webinar exploring the extraordinary benefits of neurodiversity. "Neurodiversity and Us" on Tuesday 20th September from 12:30-1:30pm via Zoom.

Neurodiversity strengthens our organizations and communities. Register now for this timely webinar you won't want to miss! [Click here to sign up](#)

CPPE Newly Qualified Pharmacist Programme 2023-24

The Centre for Pharmacy Postgraduate Education (CPPE) and NHS England (NHSE) [Newly Qualified Pharmacist Programme](#) is now open for registration. Please see the information below from CPPE and the [website](#) for further information about the training offer provided and eligibility.

Key dates – Two Cohorts for 2023-24

Cohort 5: Applications are open and will close on 30 October 2023. The programme will begin on 6 November 2023

Cohort 6: Applications will open on 8th January 2024 and close on 18th March 2024 with a start date of 25th March 2024.

Note: NHS England WT&E provides separate funding for pharmacists working for Boots or in hospital pharmacy. These pharmacists are **not** eligible to apply for the CPPE programme. The regional launch for Newly Qualified Pharmacist Pathway for hospital pharmacists will be mid-Sept 2023 and will be shared to organisation education leads.

[Click here to enrol.](#)

Improving Quality, Access and Recovering Planning Webinar

On Wednesday 20 September, we are hosting a special and very timely “lunch and learn” session to help PCNs to understand how to deliver chronic disease management and recover QOF through group clinics.

At the end of this webinar, you will understand:

- The evidence-based benefits of group clinics for patients (based on randomised controlled trials comparing one to one appointments with groups)
- How to design a group clinic that ticks QOF boxes
- How much clinician time group clinics potentially release
- A clinician’s experiences of delivering diabetes QOF as group clinics over the last 5 years.

Our speakers:

- Jason Westwood, Senior Programme manager, NHS England Nursing Directorate
- Dipti Gandhi, Managing Partner, Brigstock Medical Practice,

Date: 20 September 2023, 12:30 - 13:30

To book a free place for the webinar [click here.](#)



London Living Wage in Primary Care - Webinar



The NHS London anchor team presents the next learning session on Friday 29th September at 1:00pm – 2:00pm on MS Teams via this [link to register](#).

Part 3 of the seventeenth learning session will focus on implementing the London Living Wage (LLW) in Primary Care and retention with the Primary Care Team at NHS England & Living Wage Foundation. The focus will be on LLW in primary care, the relaunch of the updated LWF NHS Employers Toolkit (featuring the addition of primary care case studies) and how to get support in the accreditation process.

This informative session is open to all interested in anchor work. If there are any issues or questions, please email the NHS London Anchor Programme Project Officer Gabriela.Griggs@hee.nhs.uk

CVD Academy Launched

We are excited to announce that UCLPartners CVD Academy is now open for applications. The application and programme details can be viewed [here](#). The CVD Academy is a brand-new initiative from UCLPartners and is aimed at primary care clinicians with a passion and enthusiasm to reduce cardiovascular disease.

Up to 30 GPs, pharmacists and nurses will be supported via the year-long CVD Academy to implement CVD projects in their locality. The CVD Academy is funded with a grant from Daiichi Sankyo.

NB: Applications will close at 5pm on 29th September 2023.

To find out more, please do get in touch directly or email CVDAcademy@uclpartners.com



LTC Outcome Webinar 2: Technical and Financial element

Please see below the details for the LTC Outcomes Webinar.

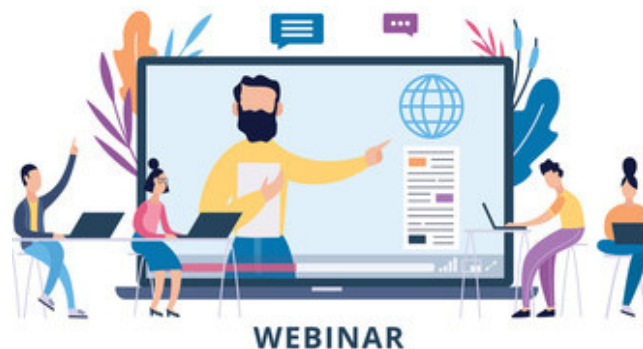
Date: Wednesday 20th September 2023

Time: 12:30 - 1:30pm

Speakers: Richard Butler - Technical Consultant,
Transformation Partners in Health and Care
Hugh Collins - Transformation Partners in Health and Care

Learning Outcomes: Understanding the following:

1. Funding allocation
2. Reward payment process (high level)
3. Payment method of calculation
4. Data extraction and performance monitoring
5. Year 1 threshold targets



Click [here](#) to book your place.



Motivational Interviewing



This interactive, lighthearted online, live study day is suitable for any and all members of the team. Registered delegates will receive their personal set of CRAFT cards, which are used during and then following the event, plus a responsibility reminder training aid! Delegates will interact, participate and influence the content of the day which will use bespoke situations to demonstrate the MI skills and they will not be asked to role play or listen to us reading through endless power point slides.

This one day course is open to any health care professional who works in North East London with patients- especially in primary care and involved with their respiratory care in particular.

Course dates: 7 November 2023 or 1 February 2024. **Please see attached flyer in the body of the email.**

ARRS Workforce Impact Survey

The QNI has opened a new online survey on the impact of the ARRS (Additional Roles Reimbursement Scheme) on the General Practice Nursing Workforce. The survey is for Registered Nurses working in General Practice, in England only.

The ARRS has been implemented by NHS England to support the introduction of new roles into General Practice, for example physician associates and pharmacists.

They have created the survey to gauge the impact of the ARRS on the General Practice Nursing workforce (RNs working in general practice). The survey has 21 questions and should take around 10 minutes to complete. It contains no identifying information.

Complete the survey [here](#).

Workforce Planning Masterclass Training Available now

The workforce Planning Masterclass programme provides a practical guide to sustainable and evidence-based workforce planning. The course will take you through the 6-step workforce planning methodology from start to finish, using a robust process that, if followed thoroughly, will greatly increase your chance of successful implementation of your workforce plan.

Whilst the 6-step methodology has been around for a long time, the value in this programme is a clear offer of support, within a curriculum to ensure quality training, in tools and techniques that can be applied to real-life projects. The programme is aimed at clinical and non-clinical staff with a specific workforce project, allowing participants to apply their learning throughout the programme and supporting tangible workforce improvement. Applicants are advised to apply within multi-professional groups of 3-5 representatives from those involved in the project.

The next cohorts are expected to run from Oct 2023 and Nov 2023.

The [application portal](#) is currently open. Due to the holiday season, the closing date has been extended to 18th September 2023.



London Cancer Community of Practice Event

London based GPNs, community nurses and AHPs and specialist cancer nurses are invited to join this in-person Community of Practice (COP) event next month.

This half-day event is designed with speakers and opportunities to work together at the conversation cafe with those in your integrated care systems. Lunch is provided, and there will be ample opportunities for networking.

Please follow the link to [register a space](#).

Wednesday 18th October, 9:00am – 1:00pm at CLCH Academy, 1 Frith St, London W1D 3HZ

Primary Care UK Podcast - Patient Access to Records

The Primary Care UK [podcast](#) has published a new episode on an important and urgent topic: From later this month, Practices will be opening access such that patients will then be able to readily view their full records with ease. Whilst there are benefits to this, it does mean that:

1. Practices need to sign up by the deadline during this month.
2. Working frontline clinicians need to consider very carefully what they document and how they document from now on.

Please click [here](#) to view the podcast.

